

The Cutting Edge Log Purchasing Made Easy



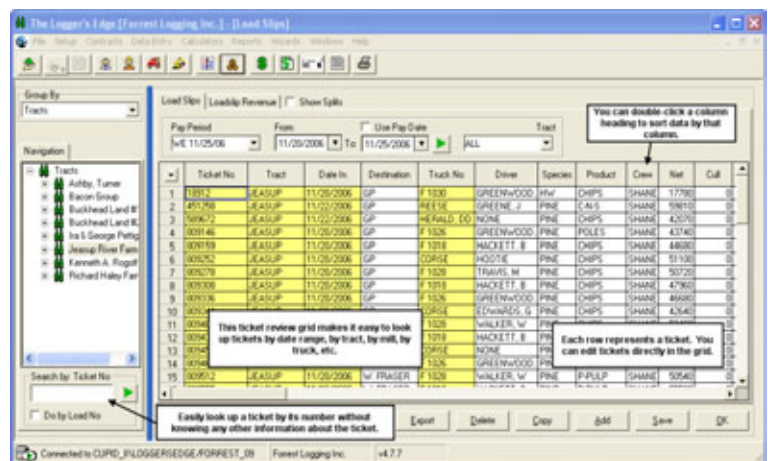
Take the Headache Out of Paying for Logs
with **The Cutting Edge**

Caribou's Cutting Edge software is an easy to use, Windows-based application that helps you streamline your log payables and fiber procurement process. The Cutting Edge allows you to spend more time managing your business and less time managing your paperwork!

Log Purchasing

- Generate Professional Subcontractor & Landowner Pay Statements
- Pay by Ton, Cord, MBF, Mile, Ton-Mile, Percent of Load Value
- Manage Depletion on Company-Owned Tracts
- Streamline Timber Taxes
- Analyze Fiber Costs By Supplier or by Type of Wood
- Easily Track and Bill for Outside Deliveries
- Weigh Scale (Optional): Seamless Load Entry at Your Weigh Scale

Easy to Use Load Ticket Look-up Screen



Imagine if You Could:

- **Save Time:** Enter Data Once, and Have it Appear on All Related Revenue and Cost Statements and Reports — No More Fighting with Spreadsheet Copying & Pasting
- **Be Well-Informed:** Compare Average Costs Per Ton, Cord, or MBF Across Suppliers and Across Different Products & Grades of Timber
- **Be More Professional:** Generate Accurate & Nicely Formatted Statements for Your Landowners, Your Bankers, and Your Loggers

The Result: Professional Statements

Hannah Timber Company			
Payee: Wilson Brothers Box 2112 Caribou, Maine 04736	1545 County Road 31 Caribou, ME 04739	Statement No: 114	
		Pay Period: 06/01/2009	06/30/2009
		Start Date: 06/01/2009	06/30/2009
		End Date: 06/30/2009	
Payment Description	Pay Rate	Payment Amount	
Pay By Loadslips			
Heading			
CFT - EA0906 (Load Cost: 42)	532.650 TON	3,286.72	
CFT - EA0906 (Load Cost: 42)	42.000 LOAD	5,040.00	
CFT - EA0906 (Load Cost: 16)	420.000 TON	2,712.64	
CFT - EA0906 (Load Cost: 42)	42.000 LOAD	5,360.00	
	Heading Total: (Load Cost: 122)	\$16,321.36	
Logging			
CFT - EA0906 (Load Cost: 60)	1,833.000 TON	39,633.55	
CFT - EA0906 (Load Cost: 60)	1,768.920 TON	31,796.12	
	Logging Total: (Load Cost: 122)	\$71,429.67	
	Pay By Loadslips Total:	\$87,751.03	
	Statement Sub Total:	\$87,751.03	
	Statement Total:	\$87,751.03	

Why Is The Cutting Edge A Smart Investment?

Let Our Users Tell You . . .

"I continue to be impressed with the ease with which I can generate reports and check production. I am really making decisions based on much more accurate information than I have ever had before . . . I feel more confident in making decisions based on facts rather than hunches."

"Now that I have the software, I can stay on top of where my suppliers are at relative to the quantities we agreed to take here at the mill. In the past, I'd often realize that we exceeded the agreed upon deliveries after the fact, but never had timely enough information to react."

"I love the system! It's so much easier than our old system, and the Georgia Timber Tax module is a huge time saver."

"My business is more professional with the reports and invoices that I generate with Caribou's software."

"I really like the way the software can be customized to our needs. It is also very user friendly and forgiving."

"We were able to add on additional production in the woods without having to hire additional people in the office."

"Caribou's support is stellar!"

"It takes me about half the time to do my weekly paperwork now that I have The Cutting Edge!"

Call us now at (706) 749-1541 to schedule a free, one-on-one online demonstration to see if our product is right for you!

At Caribou Software . . .

- Our product is developed and supported by people who know the forest industry.
- Our product is one of the most **functional** and **affordable** systems available in North America for small sawmills.
- Our philosophy is like Burger King's—we do our best to let you have it your way! Our system is configurable to your terminology and we can customize reports to let you see your data organized the way you want it!
- Our goal is to make every customer a reference site, so you can be assured that we'll do our best to provide the best product and service in the industry, bar none!

